



# Our Sales Programme at a Glance

Sheets and Foils  
made of Thermoplastics.



# Product Range



## Sheets & Foils

### Thicknesses and Widths:

- sheet thicknesses: from 0.35 - 12.5 mm
- sheet widths: from 300 - 2300 mm
- sheet length: from 300 - 5300 mm
- roll thicknesses: from 0.35 - 2.5 mm
- roll widths: from 300 - 1600 mm

- ✓ mono-extrusion    ✓ co-extrusion    ✓ blends    ✓ secondary finishing    ✓ cut-to-size pieces

### Colours of Sheets and Rolls:

- natural, black, white and coloured according to RAL, Pantone, HKS or pattern sample

### Surfaces:

- machine finished on both sides
- various textures, also on both sides
- top side glossy
- colour stripes
- decorative film lamination

### Corona Treatment:

- one-sided or double-sided

### Protective films on one or both sides

## Blends



### Areas of Application:

- thermoforming
- mechanical processing
- adhering

### Types:

#### > PS/PE-Blend

- with variable PE portions
- use-oriented blends
- glossy
- matte

#### > PS/PE-EL-Blend

- electrically conductive

#### > Polystyrene flame retardant

- UL94-V0
- UL94-V2
- glowing wire resistance 750°C + 850°C

#### > ABS-SE flame retardant

- according to UL94 V0
- glowing wire resistance 650° C

#### > ABS/PC-Blend

- ABS with PC share of up to 65%
- Optionally flame retardant

#### > ABS/PA

- ABS with PA share

#### > ASA/PC-Blend

- various combinations
- various surfaces

## High impact Polystyrene

### Areas of Application:

- thermoforming (deep drawing)
- silk screen printing
- offset printing
- digital printing
- coating
- mechanical processing
- adhering

### Special Features / Optional Extras:

- antibacterial
- antistatic agent
- flame resistant
- UV stabilization
- increased impact strength
- colour stripe
- corona treatment
- protective film, one-sided or two-sided

### Variants:

#### > **SB Coex (Koextrusion)**

Polystyrene (HIPS) – Co-extrusion  
- up to 4 raw materials, up to 6 layers

#### > **SBS Clear - Styrolux**

Polystyrene transparent

#### > **SBS Clear - Styrolux mit Glanzschicht**

transparentes SBS/GPPS

#### > **Frost / ICE / Kristall**

translucent with outstanding optic

#### > **Polystyrol SB-Regenerat**

Based on regrind, mixed colors or reworking,  
optionally as a mixture and/or with additional  
equipment

#### > **PS-TPE (S) Coex**

Polystyrene with TPE top layer,  
skid-proof top-layer with exceptional haptic  
(comparable soft-touch), various combinations  
and surfaces

#### > **Polystyrene - ESD**

electrically conductive, volume or surface  
conductive

#### > **Polystyrene - IDP**

Intrinsic dissipative Polymere, electrically  
conductive also possible in colours, volume or  
surface conductive

#### > **PS SB-ESD-NANO TUBE**

Based on black, electrically conductive  
Polystyrene - Carbon - Nanotube - concentrate

#### > **Polystyrene flame retardant**

- Flame retardant according to UL94 V0
- Glowing wire resistance 750° + 850° C

## Areas of Application:

- thermoforming (deep drawing)
- coating
- printing
- mechanical processing
- adhering

## Special Features / Optional Extras:

- antibacterial
- increased impact strength
- antistatic agent
- corona treatment
- flame resistant
- UV stabilization
- colour stripe
- protective film, one-side or two-sided

## Co-extrusion:

up to 4 raw materials or  
colors in up to 6 layers

### Examples:

- virgin material / regrind
- matte material / standard or regrind
- ASA/ABS-Standard or regrind
- PMMA (glossy or matte) / ABS virgin material
- TPU/ABS virgin or regrind  
(TPU also available for both-sides)
- TPE/ABS virgin material or regrind  
(TPE also available for both sides)

## Variants:

### > ABS-SG

- high impact-resistant, satin gloss

### > ABS-HG

- high impact-resistant, high gloss

### > ABS-M

- impact-resistant, matte

### > ABS-HH

- increased heat resistant

### > ABS-SE

flame retardant according to UL 94 V0 or  
glowing wire resistance 650°

### > ABS-Regrind

based on regrind, mixed colours or  
reprocessing,  
optionally available as a blend an/or with  
additional extras

### > ABS-Coex (co-extrusion in many variants)

different combinations of raw materials,  
colours or surface combinations, 2 - 6 layers,  
rolls or sheets

### > ABS / PMMA Coex

ABS with PMMA-top layer  
matte, highly glossy, transparent, coloured,  
various combinations, different surfaces, also  
ESD-quality available

### > ABS / PMMA / PMMA - Coex

ABS sub-layer with coloured PMMA  
middle-layer and transparent PMMA top-layer

### > ABS Virgin Material / ABS-Regrind - Coex

### > ABS-matte / ABS-Standard or Regrind - Coex

### > ABS / TPU - Coex

ABS with TPU top-layer, one-sided or  
two-sided  
skid-proof, abrasion-resistant top-layer  
various combinations und surfaces  
also available with colour stripes  
or UV stabilized  
also available in ESD quality

### > ABS / PC - Blend

ABS with a share of PC of up to 65%  
also flame retardant

### > ABS / PA - Blend

ABS with a share of PA

## weather resistant, high impact

Sheet and rolls with high toughness and stiffness for thermoforming, mechanical processing.  
Resistant against many chemicals, effects of weathering, UV radiation, seawater etc.  
Suitable for outdoor applications.

### Areas of Application:

- thermoforming (deep drawing)
- mechanical processing
- adhering

### Optional Extras:

- increased UV stabilized

### Typen:

#### > **ASA-G**

glossy (Standard)

#### > **ASA-M**

matte

#### > **ASA-SM**

supermatte

### Co-extrusion:

up to 4 raw materials of colours in up to 6 layers  
ASA virgin material / ABS-virgin material or regrind  
(ASA also available on both sides)

### Variants:

#### > **ASA / ABS - Coex**

ABS mit ASA-top layer

Sheets and rolls

various combinations available

different surfaces available

various colour combinations available

#### > **ASA-SoftTouch**

Sheets with exceptional haptic (softtouch),  
anti-skid effect

available as mono- or co-extrusion

for thermoforming, adhering,

mechanical processing;

for displays, packaging, decoration, covering,  
paneling etc.

suitable for inside and outside use.

suitable available in machine finish or grained.

## Areas of Application:

- thermoforming
- mechanical processing
- adhering

## Variants:

### > Polystyrene-ESD (electrically conductive)

(virgin, regrind or rework)

Types:

- volume conductive
- surface conductive
- increased impact-modified
- adjustments from  $10^3$  -  $10^7$  Ohm/cm<sup>2</sup>
- individual adjustments of conductivity by arrangement

### > ABS - ESD (electrically conductive)

virgin material

- volume conductive
- surface conductive

### > PS/PE - ESD (electrically conductive)

Types:

- volume conductive
- surface conductive
- individual adjustments of conductivity from  $10^4$  -  $10^6$  Ohm/cm<sup>2</sup> by arrangement

### > TPE-ESD (electrically conductive) /

#### PS-ESD (electrically conductive) -

##### Co-extrusion

(PS-ESD with top layer of TPE-ESD;  
TPE-ESD also available on both sides)

### > TPE-ESD (electrically conductive) /

#### PS/PE-ESD (electrically conductive) -

##### Co-extrusion

(PS/PE-ESD with top layer of TPE-ESD;  
TPE-ESD also available on both sides)

### > TPU-ESD (electrically conductive) /

#### ABS-ESD (electrically conductive) -

##### Co-extrusion

(ABS-ESD with top layer of TPU-ESD;  
TPU-ESD also available on both sides)

### > Polystyrene-ESD Nano-Tube

based on black, electrically conductive

Polystyrene - Carbon - Nanotube - concentrate

- extended adjustment area of electrically conductive resistance ( $10^2$  -  $10^{10}$  Ohm/cm<sup>2</sup>)
- low material abrasion
- homogeneous electrostatic properties
- no pre-drying necessary
- low loss of conductivity by thermoforming
- good forming properties = reduced cycle times
- excellent surface gravity
- lower specific gravity
- good impact resistance



## Areas of Application:

- thermoforming
- mechanical processing
- adhering

## Variants:

> **TPU/ABS - Co-extrusion, TPU also available on both sides**

### Types:

- TPU-Standard (glossy)
- TPU-matte
- TPU aliphatic, increased UV resistant
- electrically conductive (ESD)
- adjusted shore hardness

> **ABS-Softtouch (TPE) / ABS-Co-extrusion**

> **ASA-Softtouch (TPE) / ABS-Co-extrusion**

> **PS (HIPS)-Softtouch / TPE - Co-extrusion**

Polystyrene-Softtouch

### Types:

- adjusted shore hardness
- electrically conductive

# Decoration / Mirror



## Areas of Application:

- thermoforming (limited use)
- silk screen printing
- offset printing
- digital printing
- coating
- mechanical processing
- adhering

## Special Features / Optional Extras:

- antistatic agent
- fire retardant
- UV stabilized
- permanently antistatic
- increased impact strength
- protective film, one-sided or two-sided available

## Variants:

> **Decoration Film Lamination, extraordinary look on sheets and rolls of Polystyrene or ABS**

- e.g. aluminium, silver brushed, carbon
- special decorations on demand
- decoration films based on: PMMA, PET, ABS
- matte or glossy
- protective film

> **Hot stamping**

- decorations on request
- matte or glossy
- protective film

> **Polystyrene - mirror**

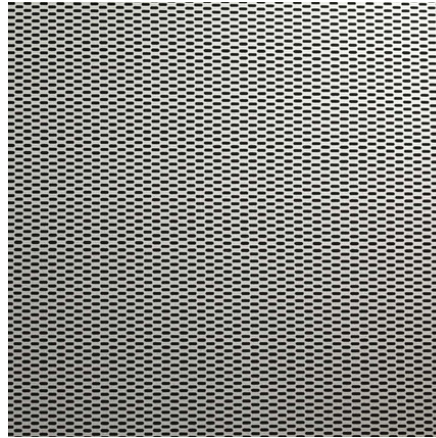
- silver, gold, titanium
- silver: 2,000 x 1,000 x 1.0 - 3.0 mm
- sub layer black or white

*Mirror in silver  
available ex stock*

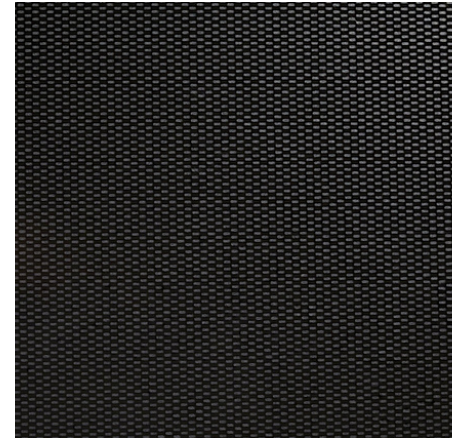




Alu brushed



Carbon Silver



Carbon Black



Wood Decor



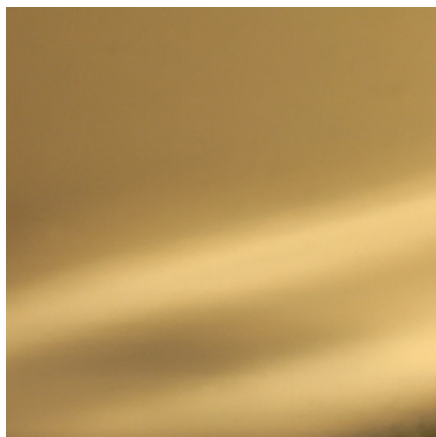
Wood Decor with Graining



Wood Decor with Graining



Mirror Silver



Mirror Gold

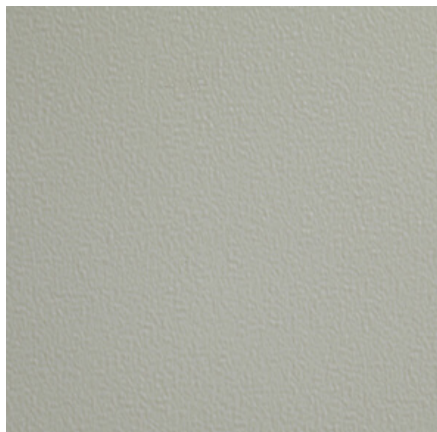


Hot Stamping





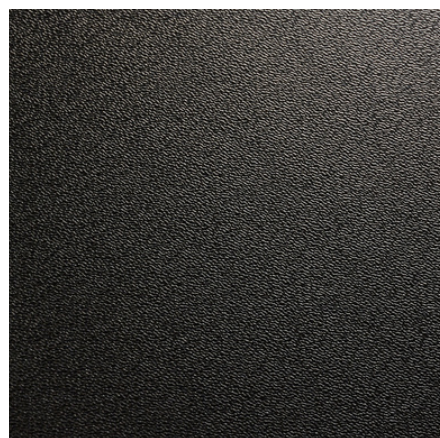
Fine Grain  
KVS 3



Planar Grain  
KVS 5



Fine Cowhide Grain  
(Daimler-Benz Approval)  
KVS 6



Pinseal Grain  
KVS 8

Here you find a small  
selection of our product  
portfolio.

Double-sided graining is  
available as well!

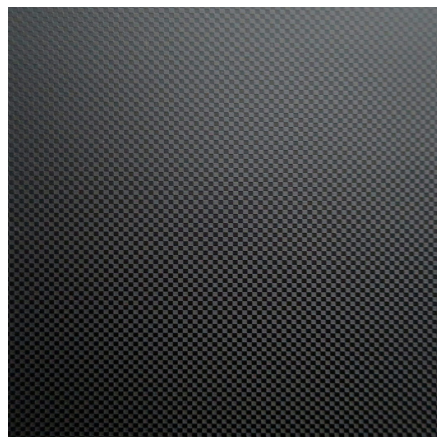
Get in touch for further  
information or one of our  
sample kits!



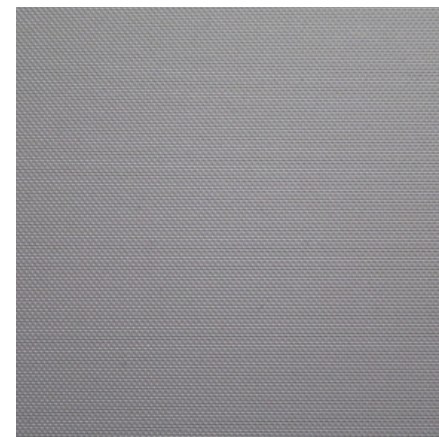
Fine Planar Grain  
KVS 9



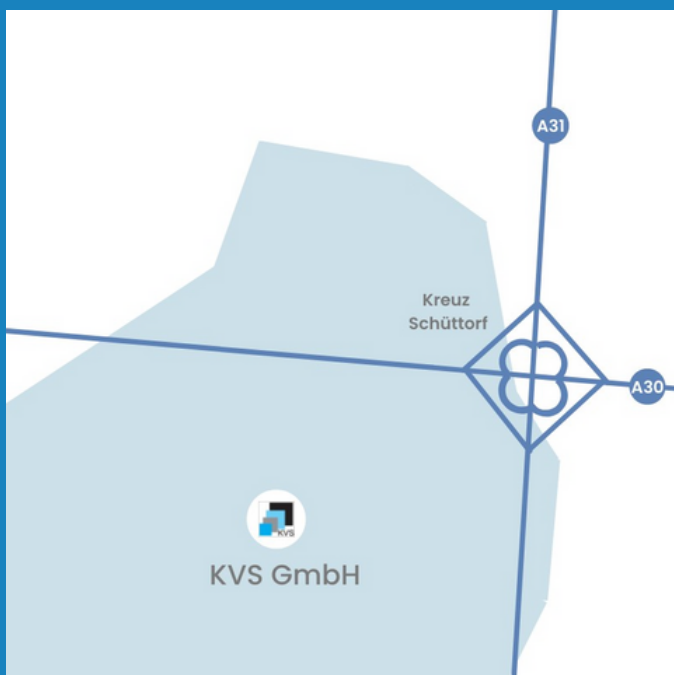
Coarse Grain  
KVS 11



Square  
KVS 22



Magic Pearl  
KVS 23



**KVS** GmbH

Niedersachsenstraße 16  
48465 Schüttorf  
Germany

Telephone: + 49 (0) 59 23 / 90 36-0  
Telefax: + 49 (0) 59 23 / 90 36-29  
Email: [info@kvs-gmbh.com](mailto:info@kvs-gmbh.com)  
Internet: [www.kvs-gmbh.com](http://www.kvs-gmbh.com)

